

SCHIEDERWERK

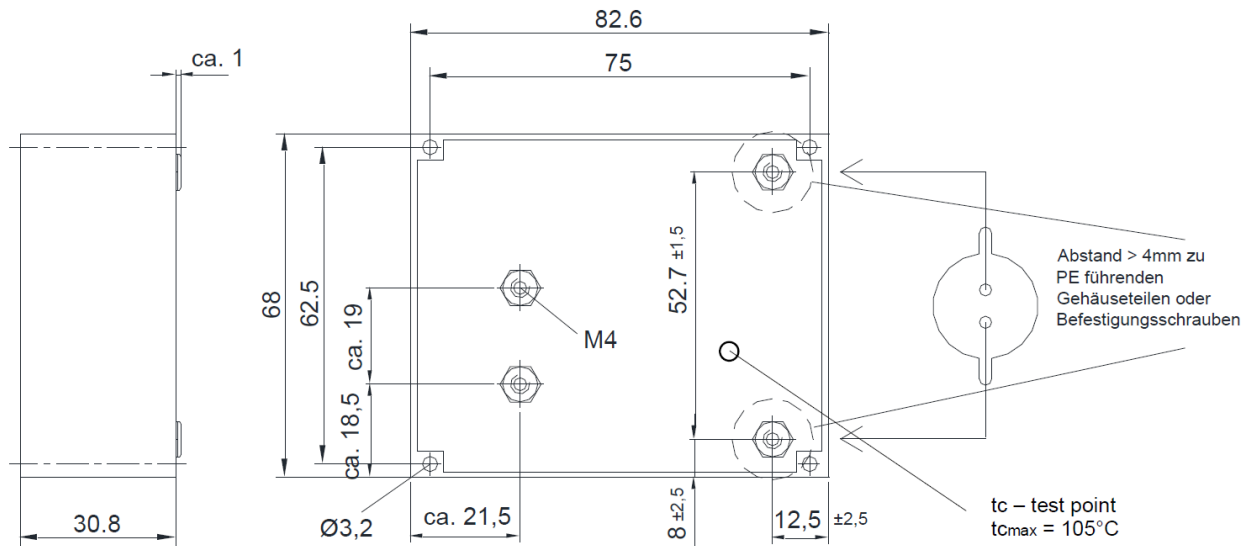
**Ignitor
for electronic lamp ballasts**

KZG 20-5

Technical Specifications

Technical Data

Characteristics	
Lamp current	22 A
Frequency (square wave)	1 .. 300 Hz
Operating input voltage range (ignition mode)	300 V - 400 Vp
Maximum ambient temperature	60° C S-type 100°C
Weight	ca. 0,370 kg

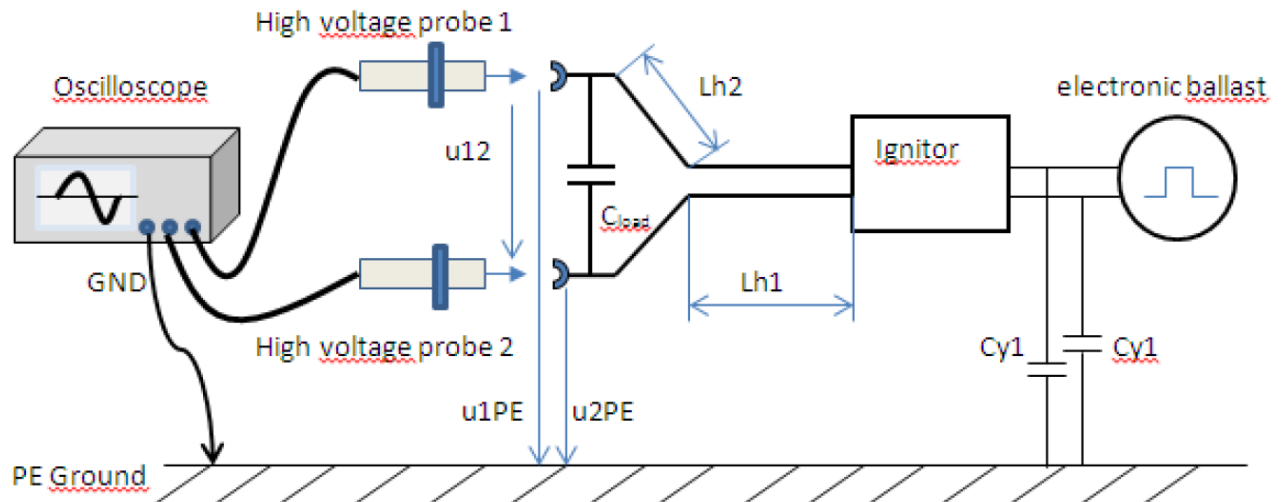


All dimensions in mm.

ORDER NUMBERS

Article	Order No.	Remarks	Ignition Voltage
KZG 20-5	32 572 1050	Screw terminals M4 (max. screw-in depth: 9mm)	5kV

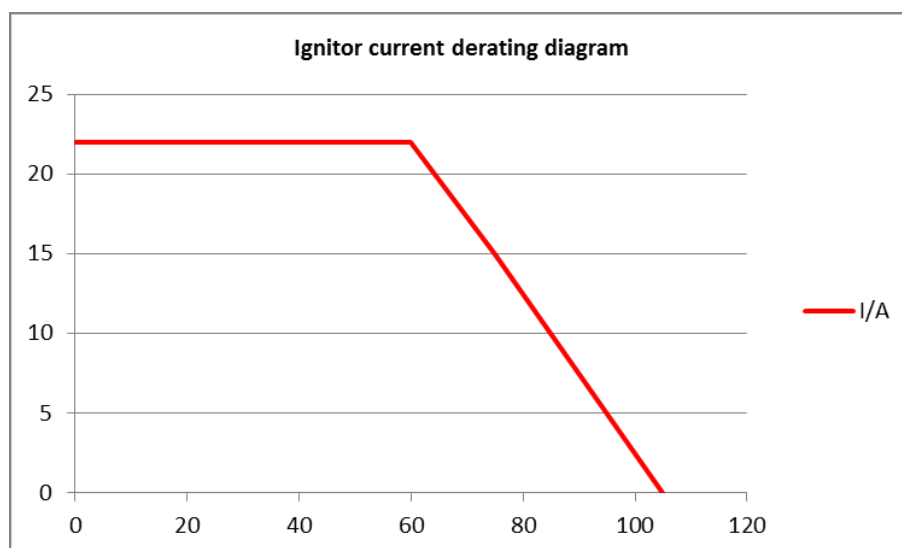
Ignition voltage measurement test setup



HV cable length Lh1+Lh2	Output voltage (peak) u_{12}	Output voltage to PE ground (peak) u_{1PE}, u_{2PE}	Tolerance	Remarks
150mm	5kV	2,5kV *)	+/-30%	~20pF load capacitance

*) presumed symmetric installation conditions referring to PE ground

Derating diagram showing the max. allowed ampacity of the ignitor vs. ambient temperature



Attention:

These Ignitors are developed for Schiederwerk electronic ballasts, only. Using them with non-Schiederwerk ballasts will void warranty claims.

Hot restrike ignitors have to be used with electronic ballasts having limited ignition time. Hot restrike ignitors should not be operated continuously for more than 3 seconds, otherwise dysfunction could be caused.

Cold start ignitors have to be used with electronic ballasts having limited ignition time. Cold start ignitors should not operate continuously, otherwise dysfunction could be caused.

Subject to changes without notice

Warning Notice

Do not attempt to handle or operate an electronic power supply (EPS) and ignitor before completely reading and understanding this notice. Contact Schiederwerk if you are uncertain of hazards associated with these devices.

The ignitor produces starting voltages of up to 5 kV and electromagnetic radiation interference which are hazardous to personnel and sensitive instrumentation. Exercise appropriate care in the handling of high voltages. Do not touch any conductive parts during operation.

Both electronic lamp ballast and ignitor must never be installed or operated in an explosive or volatile atmosphere. Never use the ballast or ignitor near flammable gases or liquids. See that there will be no moisture, dust or similar which could lead to short circuits or fire.

Before using the ballast or ignitor in any kind of outdoor application you have to take additional measures and observe special requirements. If you are uncertain, contact Schiederwerk.

No potential isolation is provided between line input and output. Accidentally grounding of an output terminal by direct contact or arcing to GND can damage the unit (no warranty replacement).

The unit is designed for case mounting. Due observation of electrical safety and RFI suppression code requirements is mandatory in all applications. See that sufficient cooling of EPS and ignitor is provided.

All installation and repair work on this unit is only permitted by qualified personnel. Always comply with local safety requirements when operating the unit uncased.

Extreme care must be taken when testing the unit live. The use of an isolating transformer is mandatory. On no account may grounded test instruments / meters be used for this purpose!

Schiederwerk does not assume liability for disregarding of this notice, incorrect use of the EPS and ignitor or disregarding of any legal requirements. This product is subject to technical changes without prior notice.

Last Update: 30.08.2016